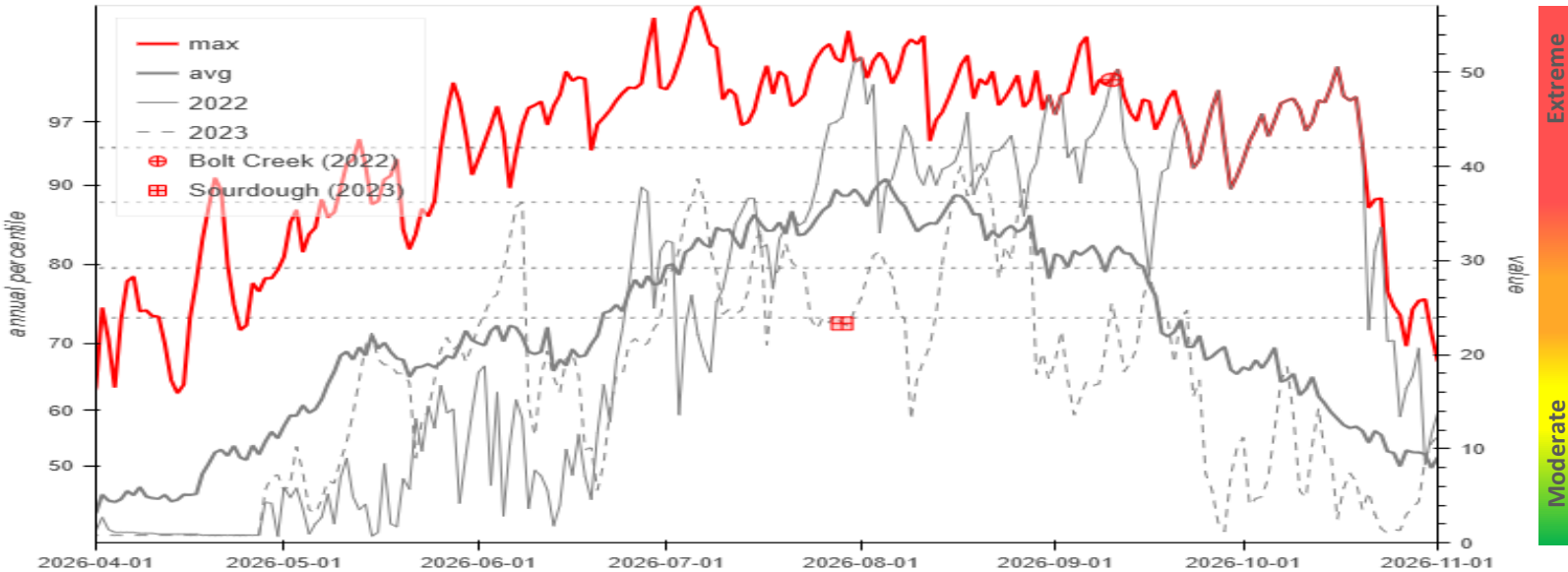


# Cascade North FDRA - ERC

Finney Creek (451509), Johnson Ridge (451611), Kidney Creek (451409) Fuel Model Y 2005-2024

## Energy Release Component



### Graph Interpretation

- █ **Extreme** – Use extreme caution
- █ **Caution** – Watch for change, especially WIND
- █ **Moderate** – Lower potential, but always be aware

**Maximum**- Maximum ERC by day for 2010 - 2024

**Average**- Daily average ERC by day for 2010 - 2024

**Critical ERC**- Large fire growth is associated with an ERC above 43 (96<sup>th</sup> percentile)

Fire date is based on the date the fire is discovered.

### Local Thresholds – Watchout

Combinations of these factors may greatly increase fire behavior:

- ✓ Temperature over 80 degrees
- ✓ Relative humidity less than 35%
- ✓ 20-foot Wind Speed over 5 mph
- ✓ 1000 Hour Dead Fuel Moisture less than 20%

### Past Experience:

- East Wind/Thermal Trough
- Low RH with poor with overnight growth
- Moss/lichen draped overstory

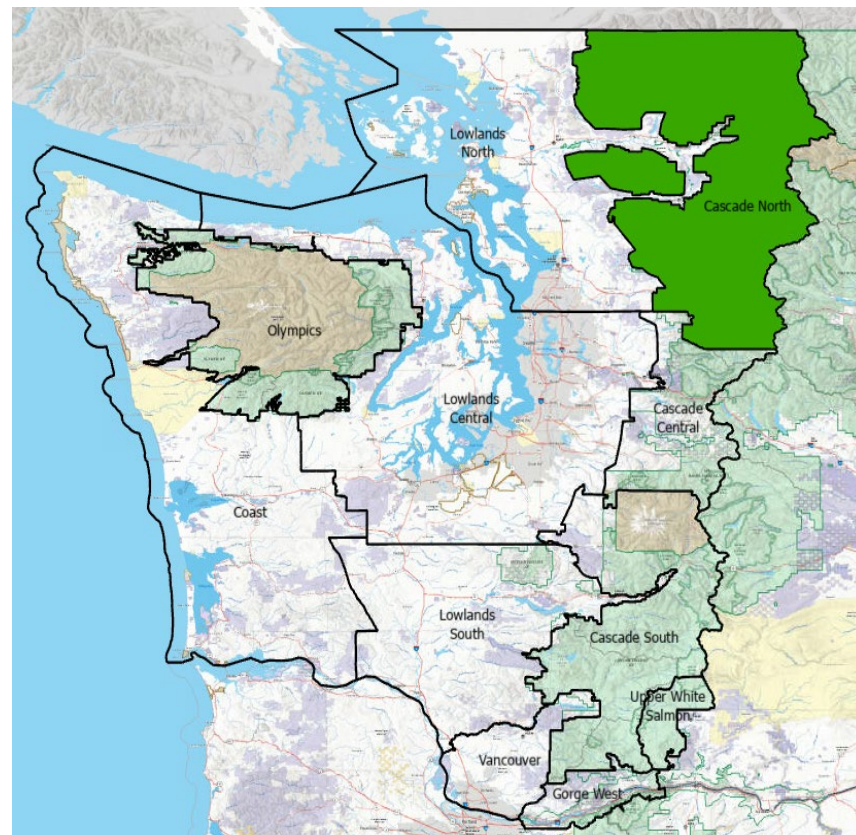
**Fire Danger Area:** Cascade North

**Station(s)\*:** Finney Creek (451509), Johnson Ridge (451611), Kidney Creek (451409)

**Fuel Model:** Y - Timber

**Fire Wx Zone(s):** WAZ566, WAZ658, WAZ659

\*Meets NWCG Wx Station Standards

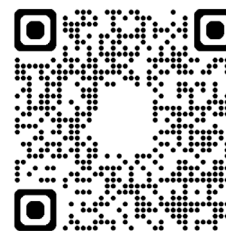


### Remember what Fire Danger tells you:

- ✓ Energy Release Component gives seasonal trends calculated from: Temperature, RH, Precipitation (amount), Solar Radiation, Day Length and Vapor Pressure Deficit.
- ✓ Wind is NOT part of ERC calculation.
- ✓ Watch local conditions and variations in Fuel, Weather, Topography across the landscape.
- ✓ Listen to weather forecasts -- especially WIND.

Created using FF+ 5v build 3/4/2026 Responsible Agency: USFS ORMSF  
Created: 2026-06-02

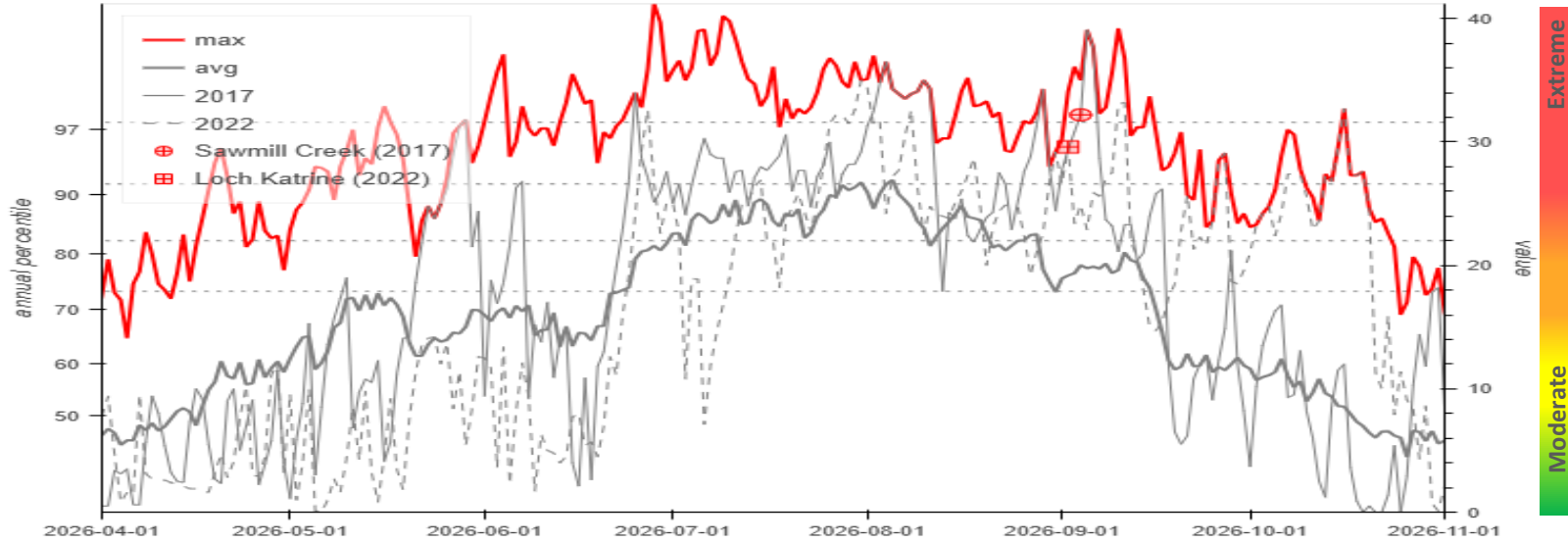
Date	Fire Name	Acres	Max Temp	Min RH	1000 Hr FM	ERC	Percentile
9/10/2022	Bolt Creek	14,820	89	16	13	49	99
7/29/2023	Sourdough	7,377	73	50	18	23	72



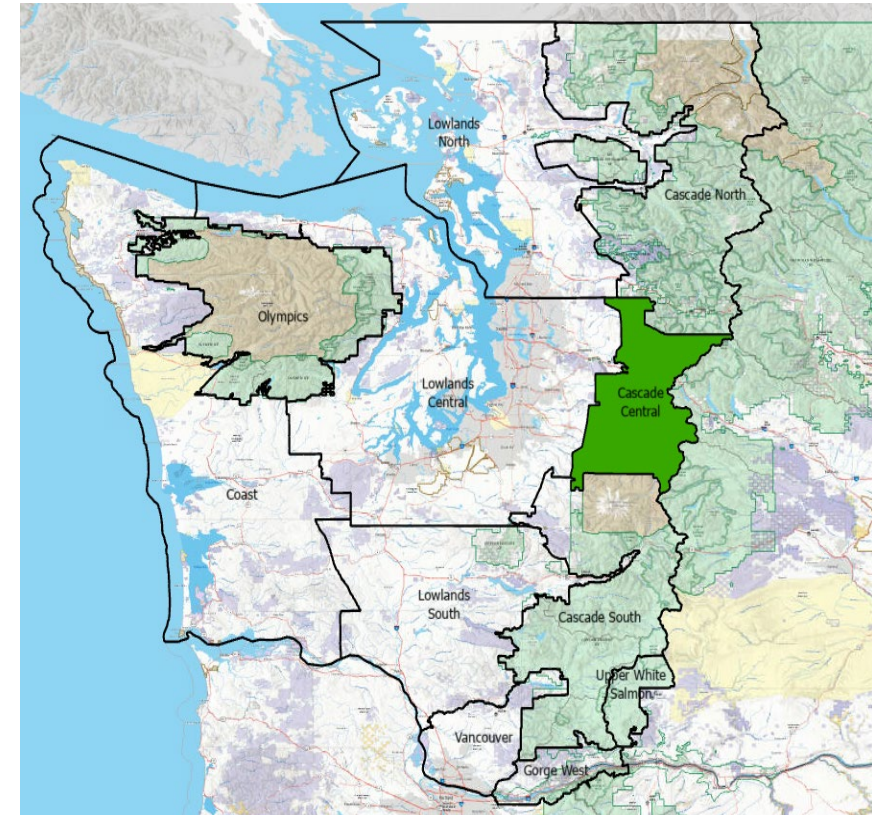
# Cascade Central FDRA - ERC

Greenwater (451718), Fire Training Academy (451721), Lester (451705) Fuel Model Y 2005-2024

## Energy Release Component



**Fire Danger Area:** Cascade Central  
**Station(s)\*:** Greenwater (451718), Fire Training Academy (451705), Lester (451705)  
**Fuel Model:** Y - Timber  
**Fire Wx Zone(s):** WAZ657, WAZ659  
 \*Meets NWCG Wx Station Standards



### Graph Interpretation

- █ **Extreme** – Use extreme caution
- █ **Caution** – Watch for change, especially WIND
- █ **Moderate** – Lower potential, but always be aware

**Maximum**- Maximum ERC by day for 2005 - 2024

**Average**- Daily average ERC by day for 2005 - 2024

**Critical ERC** - Large fire growth is associated with an ERC above 32 (97<sup>th</sup> Percentile)

Fire date is based on the date the fire is discovered.

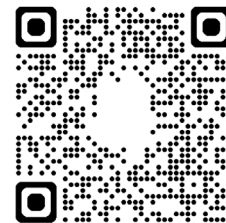
### Local Thresholds – Watchout

Combinations of these factors may greatly increase fire behavior:

- ✓ Temperature over 80 degrees
- ✓ Relative humidity less than 35%
- ✓ 20-foot Wind Speed over 5 mph
- ✓ 1000 Hour Dead Fuel Moisture less than 20%

### Past Experience:

- East Wind/Thermal Trough
- Low RH with poor with overnight growth
- Moss/lichen draped overstory



### Remember what Fire Danger tells you:

- ✓ Energy Release Component gives seasonal trends calculated from: Temperature, RH, Precipitation (amount), Solar Radiation, Day Length and Vapor Pressure Deficit.
- ✓ Wind is NOT part of ERC calculation.
- ✓ Watch local conditions and variations in Fuel, Weather, Topography across the landscape.
- ✓ Listen to weather forecasts -- especially WIND.

Created using FF+ 5v build 3/10/2026 Responsible Agency: USFS ORMSF  
 Created: 2026-06-02

Date	Fire Name	Acres	Max Temp	Min RH	1000 Hr FM	ERC	Percentile
9/4/2017	Sawmill Creek	1,061	91	27	15	34	99
9/2/2022	Loch Katrine	1,918	87	30	16	30	96