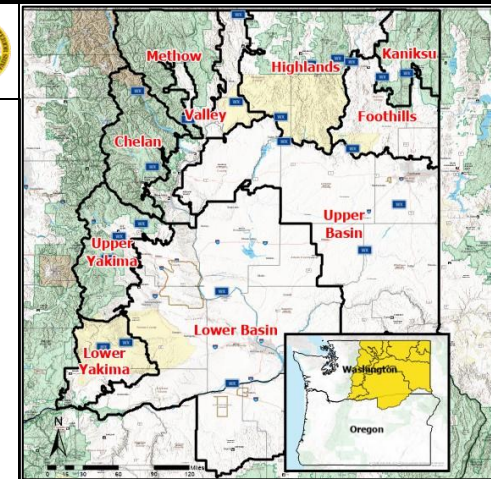


NOTES



EASTERN WASHINGTON INTERAGENCY POCKET CARD



PARTICIPATING AGENCIES

- U.S. Forest Service
- WA Dept. of Natural Resources
- National Park Service
- Bureau of Land Management
- U.S. Fish and Wildlife Service
- Tribal

FIRE DANGER INTERPRETATION

- Energy Release Component (ERC) – 5 levels, each level represents the threshold above which fires of a certain size class (<50th, 50th, 90th, and 97th percentile) were historically discovered during the analysis period (2005-2024).
- Max: Maximum ERC recorded for that day during the analysis period.
- Avg: Average ERC recorded for that day during the analysis period.
- 2015: A year to remember.

REMEMBER WHAT FIRE DANGER TELLS YOU

- ERC indicates fire season severity trends calculated at 1pm from inputs of temperature, humidity, precipitation, fuel moisture, fuel model weighting, etc.
- Wind is NOT part of the calculation.
- Pay attention to local conditions and variations across the landscape including fuels, weather, and topography.
- Listen to local weather and indice forecasts - especially wind.

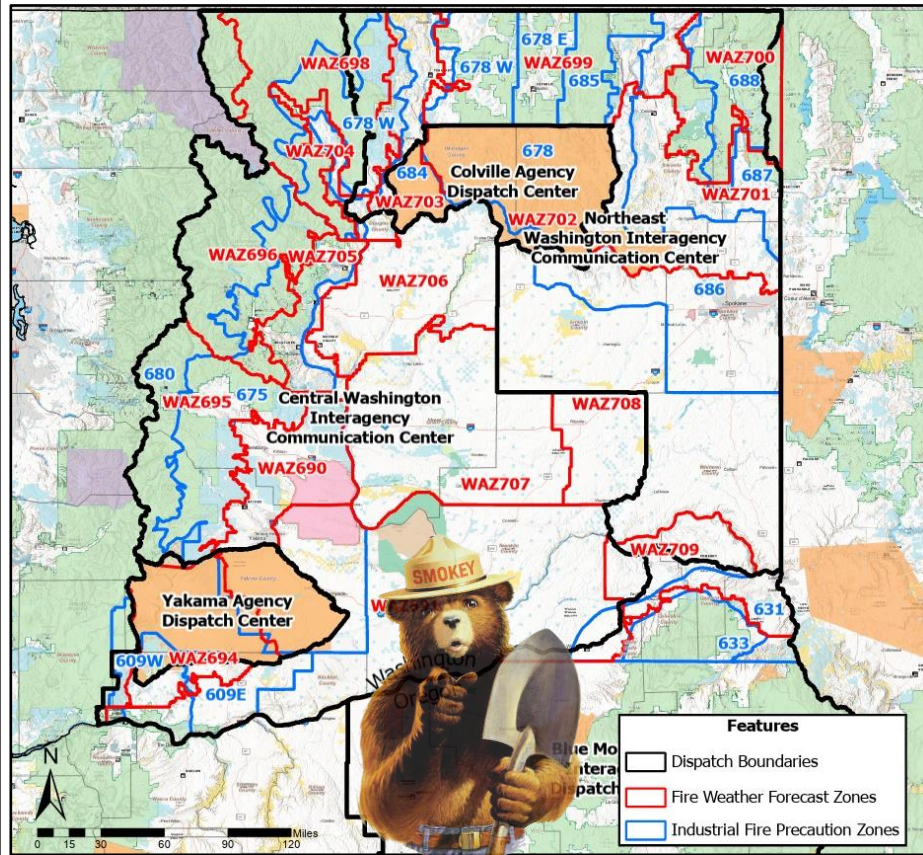
CRITICAL THRESHOLDS

- Winds > 12 MPH
- Temperature > 90°F
- RH < 20%
- 1,000-hour fuels < 11%
- Live woody fuels < 80%

WATCHOUTS

- Dry fuels, lightning with little/no precipitation, low humidity, red flag warnings, strong winds, dry air mass, cold frontal passages.
- ERC ≥ 90th percentile and poor overnight RH recoveries < 45%, especially consecutive days, are often correlated with large fire growth.
- Alignment of ERC and Burning Index (BI).

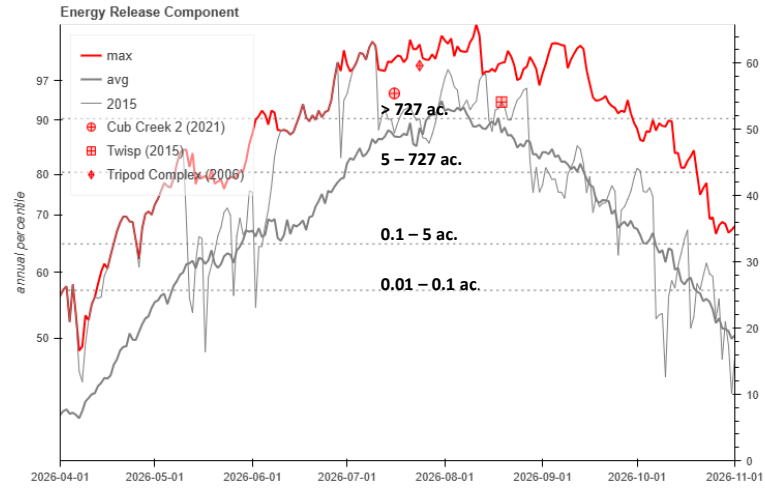
All RAWs comply with NWCG weather station standards at time of publication (May 2026)



FDRA: METHOW

RAWS: First Butte, Douglas Ingram Ridge
Fuel Model: Y-Timber

Data Years: 2005-2024
Fire Zone: WAZ698

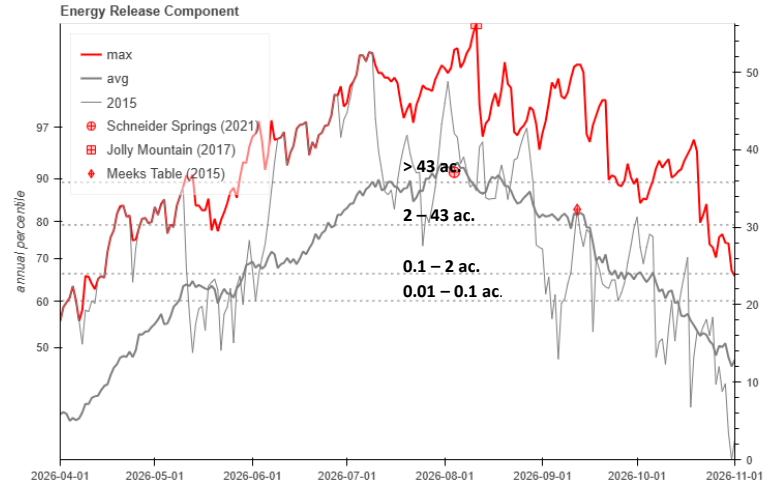


FDRA Description: Okanogan County from the Cascade Crest downslope becoming limited by moisture and aspect
Cub Creek 2: July 16, 2021; 70,168 ac.; evacuations
Twisp: August 19, 2015; 11,832 ac.; 3 FFT fatalities
Tripod Complex: July 24, 2006; 113,011 ac.; rapid growth

FDRA: UPPER YAKIMA

RAWS: Peoh Point, Swauk, Sawmill Flats
Fuel Model: Y-Timber

Data Years: 2005-2024
Fire Zone: WAZ695

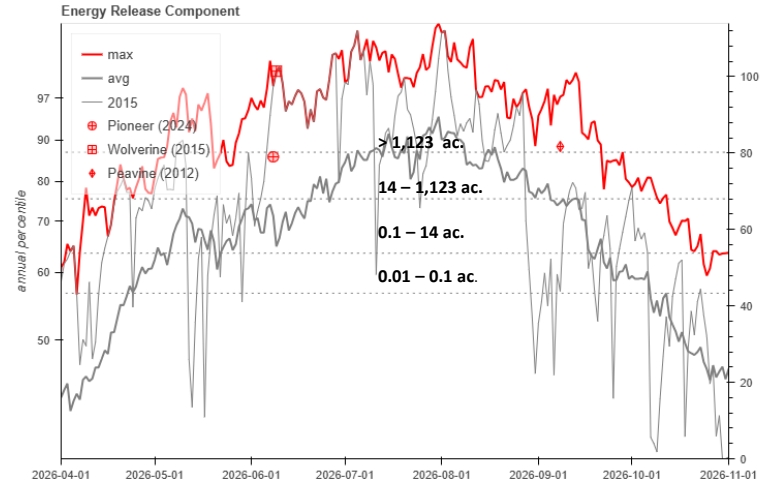


FDRA Description: Kittitas and Yakima County south to the Yakama Nation limited by moisture and aspect
Schneider Springs: August 4, 2021; 1,107,322 ac.; rapid growth
Jolly Mountain: August 11, 2017; 36,817 ac.; max ERC
Meeks Table: September 12, 2015; 1,183 ac.; rapid growth

FDRA: CHELAN

RAWS: Stehekin-Airstrip, Dry Creek
Fuel Model: Z-Slash

Data Years: 2005-2024
Fire Zone: WAZ696

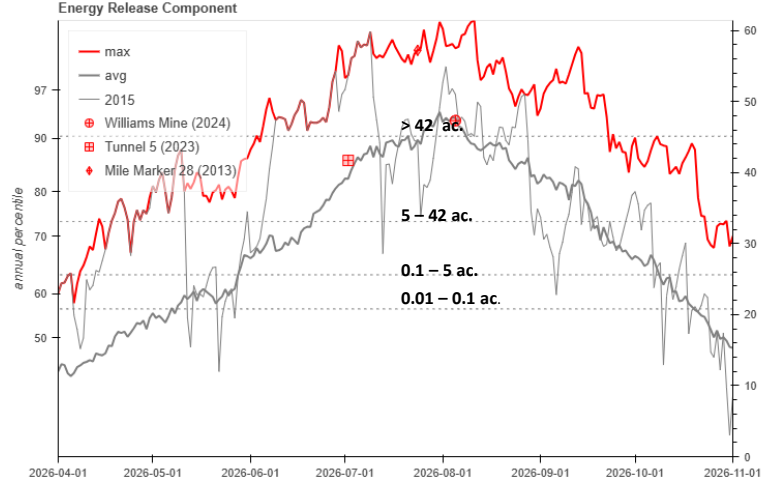


FDRA Description: Chelan County from the Cascade Crest downslope becoming limited by moisture and aspect
Pioneer Fire: June 8, 2024; 38,730 ac.; evacuations
Wolverine: June 29, 2015; 65,621 ac.; Chelan Complex
Peavine: September 8, 2012; 19,314 ac.; Wenatchee Complex

FDRA: LOWER YAKIMA

RAWS: Mill Creek, Signal Peak
Fuel Model: Y-Timber

Data Years: 2005-2024
Fire Zone: WAZ694



FDRA Description: Yakama Nation and Klickitat County downslope limited by moisture and aspect
Williams Mine: August 5, 2024; 13,092 ac.; rapid growth
Tunnel 5: July 2, 2023; 546 ac.; evacuations
Mile Marker 28: July 24, 2013; 26,093 ac.; highway closure

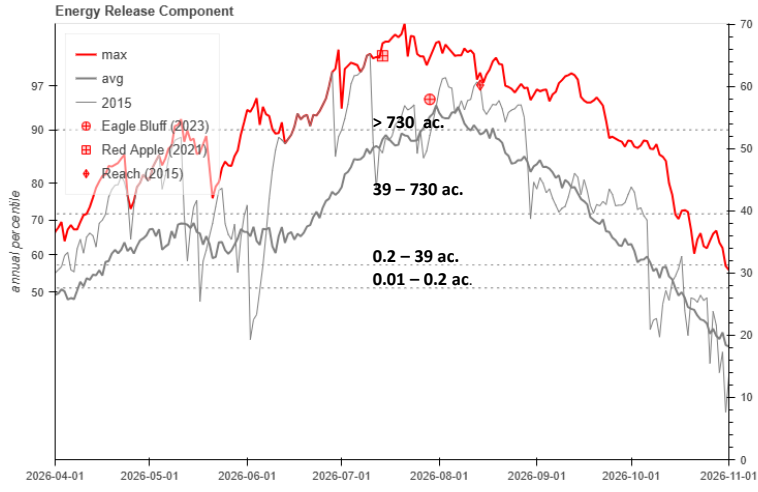
FDRA: VALLEY

RAWS: Oroville, Kramer

Fuel Model: Y-Timber

Data Years: 2005-2024

Fire Zone: WAZ703, WAZ704, WAZ705



FDRA Description: Columbia and Okanogan valley brush and grass in Chehal and Okanogan counties
 Eagle Bluff Fire: July 29, 2023; 46,428 ac.; rapid fire growth
 Red Apple: July 14, 2021; 12,288 ac.; urban interface
 Reach: August 14, 2015; 88,484 ac.; Chehal Complex

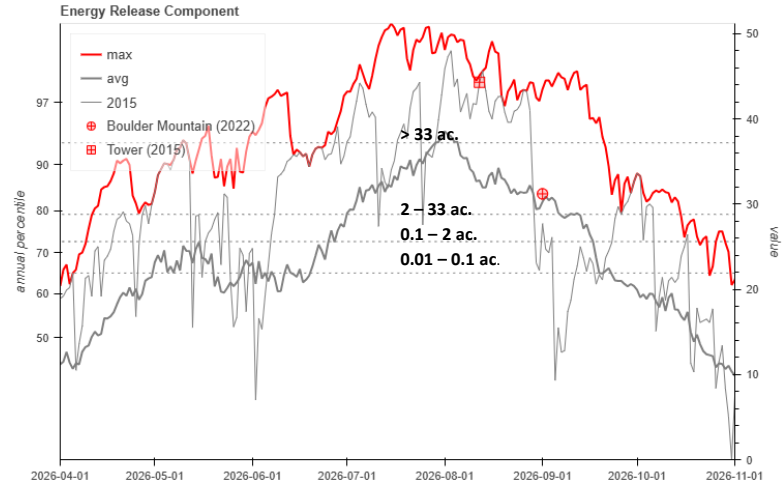
FDRA: KANIKSU

RAWS: Tacoma Creek, Little Pend Oreille

Fuel Model: Y-Timber

Data Years: 2005-2024

Fire Zone: WAZ700



FDRA Description: Covers timber in Stevens and Pend Oreille counties generally above 3,000 feet in elevation
 Boulder Mountain: September 1, 2022; 2,310 ac.; slash fuels
 Tower: August 12, 2015; 12,764 ac.; long-range spotting

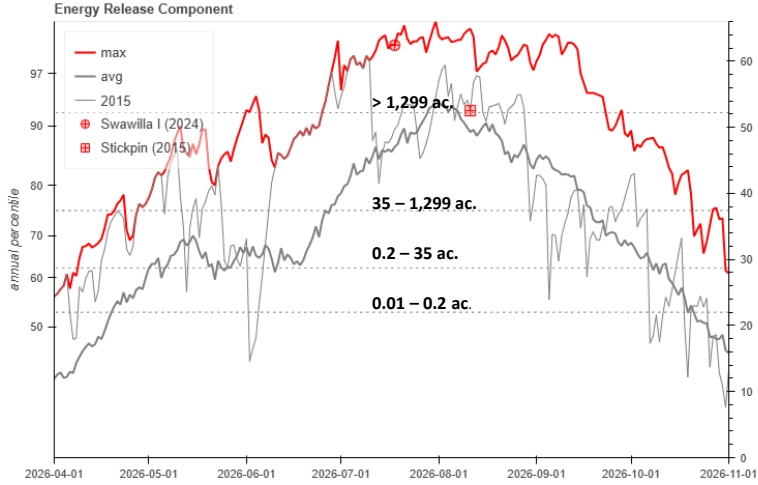
FDRA: HIGHLANDS

RAWS: Nespelem, Lane Creek, Iron Mountain

Fuel Model: Y-Timber

Data Years: 2005-2024

Fire Zone: WAZ699, WAZ702



FDRA Description: Slopes of the Kettle Mountain Range covering Okanogan, Ferry, and northern Stevens counties
 Swawilla I: July 18, 2024; 53,723 ac.; max ERC, rapid growth
 Stickpin: August 11, 2015; 54,354 ac.; evacuations

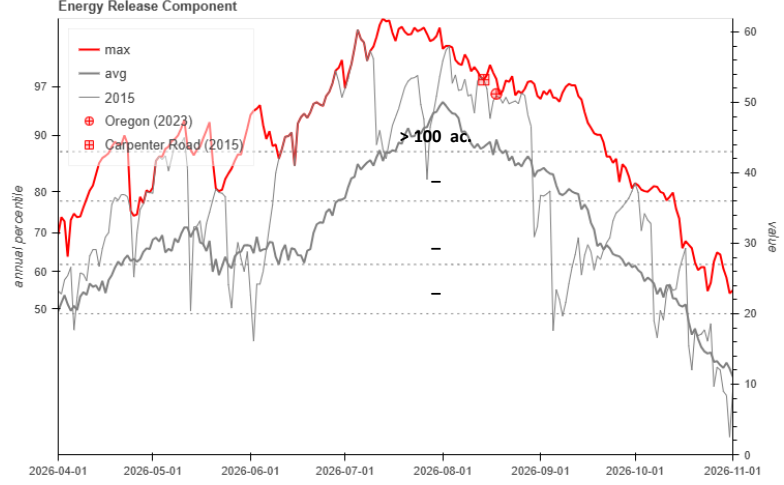
FDRA: FOOTHILLS

RAWS: Kettle Falls, Wellpinit

Fuel Model: Y-Timber

Data Years: 2005-2024

Fire Zone: WAZ701



FDRA Description: Covers grass and timber in the Colville and Spokane Valleys generally below 3,000 feet in elevation
 Oregon: August 18, 2023; 10,822 ac.; cold front passage
 Carpenter Road: August 14, 2015; 64,008 ac.; evacuations

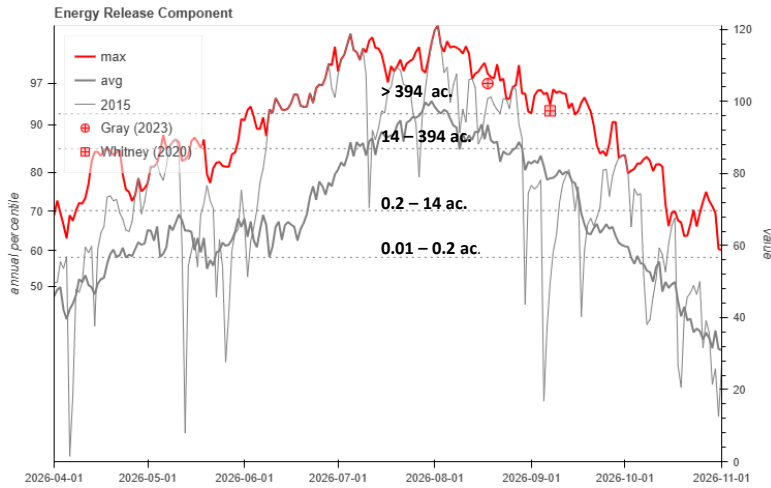
FDRA: UPPER BASIN

RAWS: Spring Canyon, Cheney, Escure

Fuel Model: Z-Slash

Data Years: 2005-2024

Fire Zone: WAZ706, WAZ708, WAZ709



FDRA Description: Interior Columbia Basin brush and grass generally above 1,500 feet elevation
 Gray: August 18, 2023; 10,064 ac.; cold front, rapid growth
 Whitney: September 7, 2020, 127,430 ac.; rapid growth

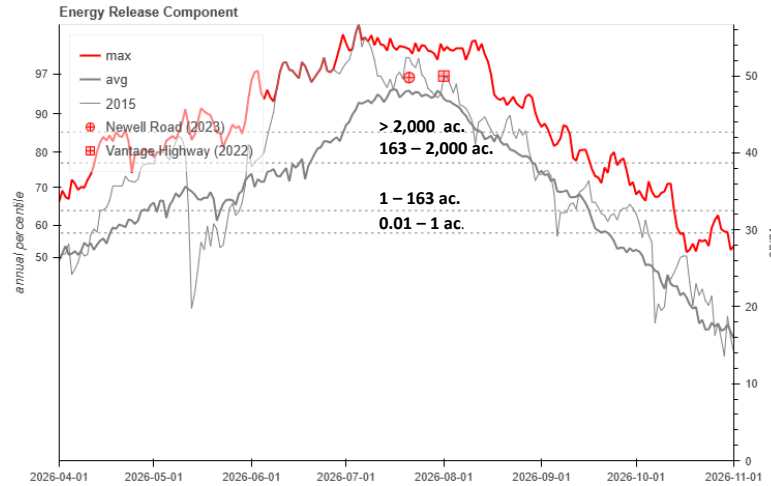
FDRA: LOWER BASIN

RAWS: Umatilla, Saddle Mountain

Fuel Model: Y-Timber

Data Years: 2005-2024

Fire Zone : WAZ690, WAZ691, WAZ707



FDRA Description: Interior Columbia Basin brush and grass generally below 1,500 feet elevation
 Newell Road: July 21, 2023; 60,551 ac.; evacuations
 Vantage Highway: August 1, 2022; 30,659 ac.; rapid growth

REFERENCE

U.S. FOREST SERVICE PUBLIC USE RESTRICTIONS

PUR Stage	Description
I	No fires, smoking, fireworks, explosives, violations of IFPL restrictions, or off-road vehicle use. Campfires are allowed in designated recreation sites (Exhibit A) and in designated Wilderness areas (Exhibit B).
II	No fires, smoking, fireworks, explosives, violations of IFPL restrictions, off-road vehicle use. Campfires are NOT allowed in designated recreation sites or Wilderness areas.
III	Forest closure.

INDUSTRIAL FIRE PRECAUTION LEVELS

Level	Description
I Closed Fire Season	Fire equipment and fire watch service is required.
II Partial Hootowl	Limits certain activities to between the hours of 8 PM and 1 PM.
III Partial Shutdown	Prohibits some activities altogether and limits other activities between the hours of 8 PM and 1 PM.
IV General Shutdown	All operations prohibited.

ADDITIONAL RESOURCES

Resource	Description
Region 6 Indices	Forecasted, current, historical fire danger indices and seasonal tracking trends.
CWICC Dispatch	Fire weather, fire danger, forecasted indices, and resource support.
NEWICC Dispatch	Fire weather, fire danger, forecasted indices, and resource support.
USFS	Fire danger, alerts, and public use descriptions with Exhibit A and B maps.
WADNR	Fire danger, outdoor burning restrictions, and industrial fire precaution levels.
Interagency Field Map	National Interagency Fire Center AGOL Field Map login required. AirDrop shareable. Field Map Search: 2026 Eastern Washington Interagency Field Map.



Region 6 Indices CWICC Dispatch NEWICC Dispatch USFS Homepage WADNR Fire Danger/IFPL Interagency Field Map