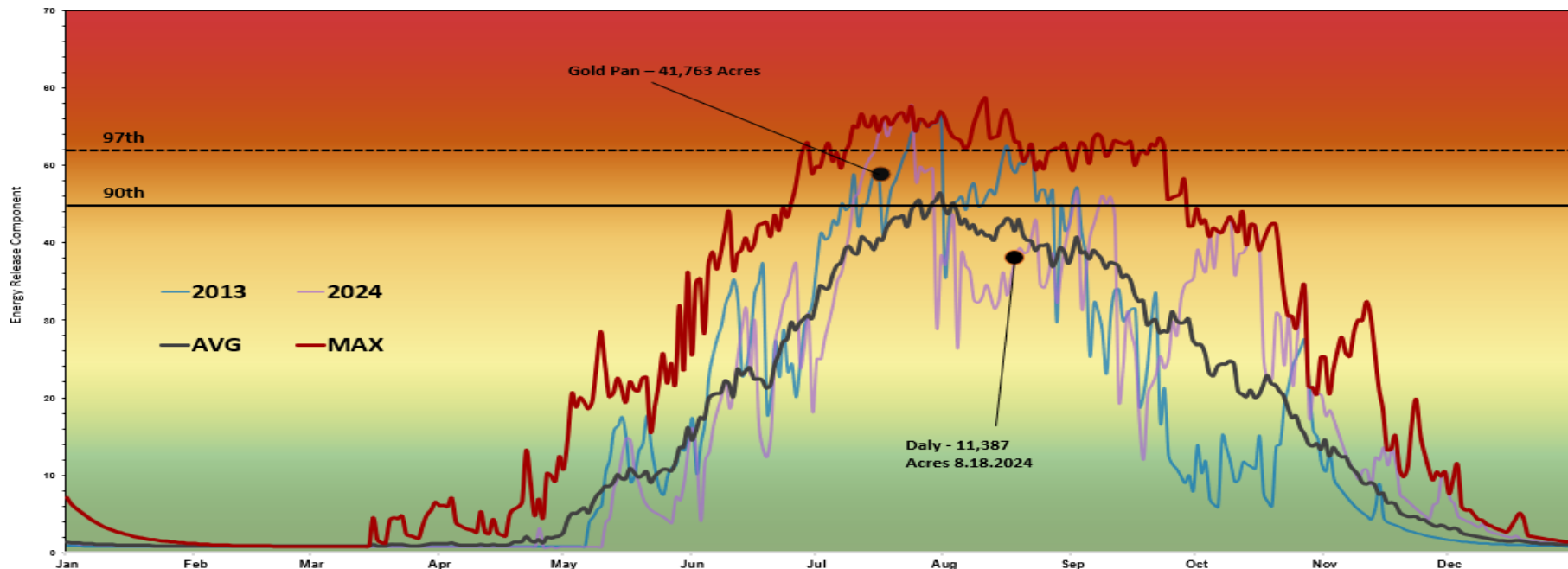


Bitterroot NF - High Elevation



Fuel Model: Y-Timber (2016)

**FIRE DANGER AREAS:** High Elevation (>6000')

**FORECAST ZONE:** 109 Bitterroot NF

**HIGH Elevation RAWs**

- 101019 Hells Half Acre
- 242902 Deer Mountain
- 242910 Tepee Point
- 242911 Gird

**GRAPH INTERPRETATION:**

Energy Release Component (ERC)

**EXTREME** – Use Extreme Caution

**HIGH** – Watch for Change

**MODERATE** – Lower Potential but always be aware

**AVG** – Shows average ERC for the last 16 years.

**MAX** – Highest ERC by day for 2010-2025.

**90<sup>th</sup> Percentile** – 10% of 5840 days from 2010 -2025 had an ERC above 45.

**97<sup>th</sup> Percentile** – 3% of 5840 days from 2010 -2025 had an ERC above 52.

**LOCAL THRESHOLDS – WATCHOUT:**

Combinations of any of these factors can greatly increase fire behavior:

- 20' Wind Speed over 15 mph, RH less than 18%,
- Temperature over 85, 1000-Hour Fuel Moisture less than 12%.

**PAST EXPERIENCE:**

For the BRH FDRA fires normally driven by W/SW winds, influenced by slopes. RH <18% with no wind causes active fire behavior with short-range spotting. Dry cold fronts are common in September with strong winds (50mph) & low RH (20%). In Mountain Pine Beetle infested areas, especially with green-attached trees, expect rapid transition to crown fire and spotting. The year 2024 set new highs in the well into November with active fires and low overnight RHs. The year 2013 had ERCs above the 90<sup>th</sup> percentile from early July to early September and the most acres burned since 2000.

