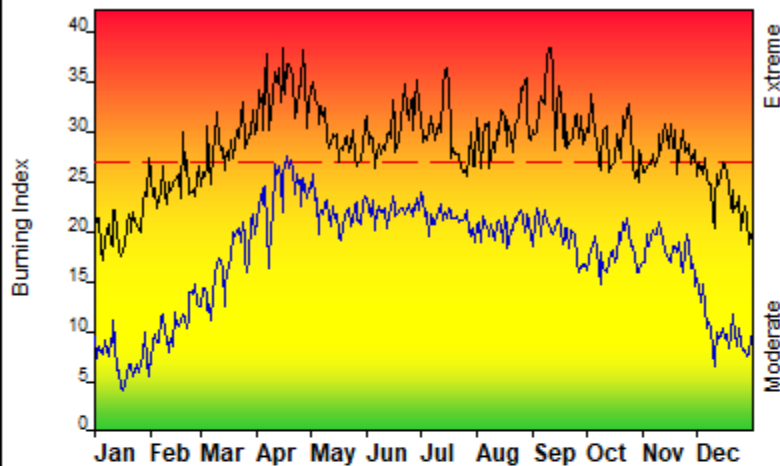


## FIRE DANGER -- New River Gorge NP & Preserve

Maximum, Average, and 90th Percentile, based on 20 years data

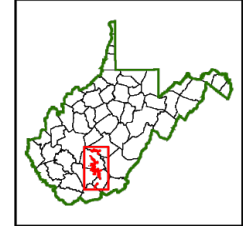


## Fire Danger Area:

- NERI
- NWS Charleston
- Grandview, Pipestem
- \* Meets NWCG Wx Station Standards

## Fire Danger Interpretation:

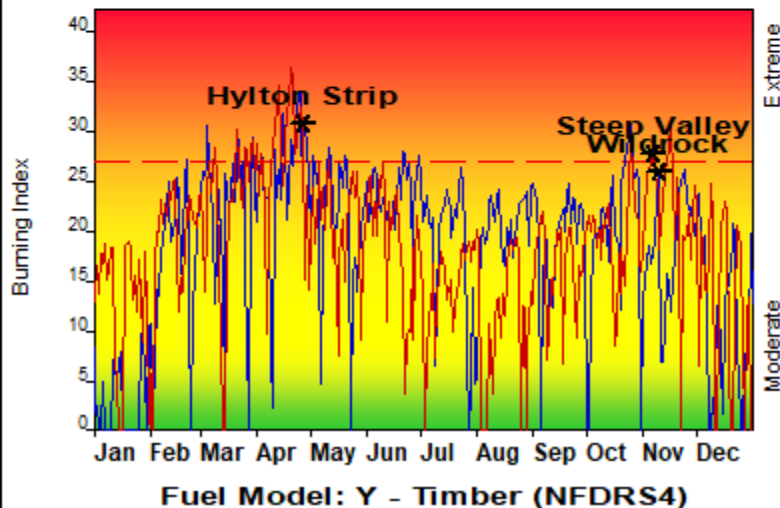
- EXTREME** -- Use extreme caution
- High** -- Watch for change
- Moderate** -- Lower Potential, but always be aware



Maximum -- Highest Burning Index by day for 2005 - 2024  
 Average -- shows peak fire season over 20 years (7300 observations)  
 90th Percentile -- 10% of the 7300 days from 2005 - 2024 had an Burning Index above 27

**Local Thresholds - Watch out:** Combinations of any of these factors can greatly increase fire behavior:  
 20' Wind Speed over 20 mph, RH less than 30%,  
 Temperature over 80, Keetch-Byram Drought Index over 350

## Years to Remember: 2022 2023



## Remember what Fire Danger tells you:

- ✓ Burning Index gives day-to-day fluctuations calculated from temperature, humidity, wind, daily temperature & rh ranges, and precip duration.
- ✓ Wind is part of BI calculation.
- ✓ Watch local conditions and variations across the landscape -- Fuel, Weather, Topography.
- ✓ Listen to weather forecasts -- especially WIND.

## Past Experience:

Thermal Belt Conditions can allow fires to burn actively at night.  
 Expect Fire Behavior to increase as Relative Humidity drops to 30% or less.  
 \*\*\*\*Watch Out for blowing leaves to cause spot fires\*\*\*\*  
 Terrain is often steep, wet, rocky and slippery.  
 Check your pace and watch your footing.  
 Maintain your Situational Awareness at all times.  
 Implement LACES before engaging!!!

Responsible Agency: National Park Service  
 FF+5.0 build 20240306 11/19/2025-08:57 (C:\Users\mqfaherty\OneDrive - D... \Pocket Card 2025)

Design by NWCG Fire Danger Working Team

