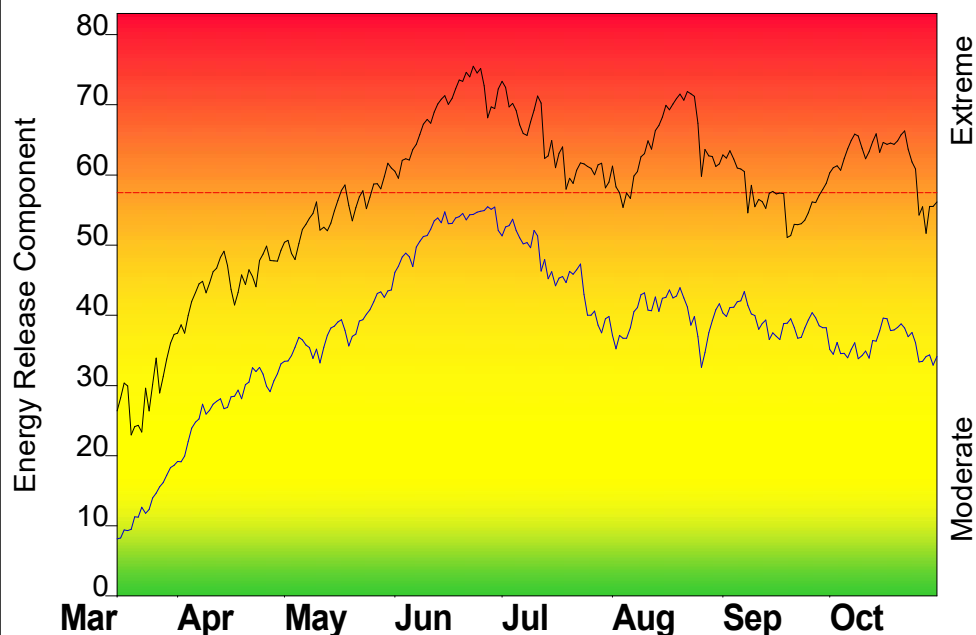


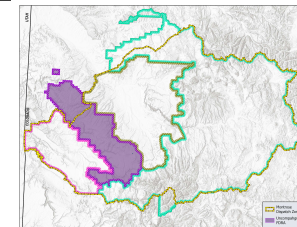
## FIRE DANGER -- Uncompahgre

Maximum, Average, and 90th Percentile, based on 14 years data



## Fire Danger Area:

- Uncompahgre
- FWZ 292/ 203
- 52409/53804/53808
- \* Meets NWCG Wx Station Standards



## Fire Danger Interpretation:

- EXTREME** -- Use extreme caution
- High** -- Watch for change
- Moderate** -- Lower Potential, but always be aware

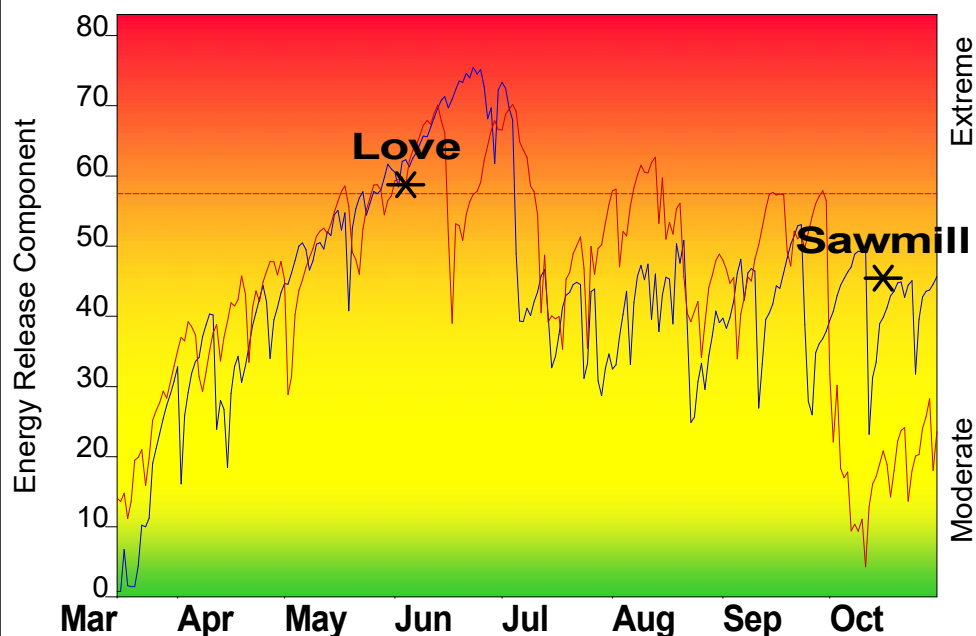
Maximum -- Highest Energy Release Component by day for 2011 - 2024

Average -- shows peak fire season over 14 years (3233 observations)

90th Percentile -- 10% of the 3233 days from 2011 - 2024 had an Energy Release Component above 57

**Local Thresholds - Watch out:** Combinations of any of these factors can greatly increase fire behavior:  
**20' Wind Speed** over 15 mph, **RH** less than 20%,  
**Temperature** over 85

## Years to Remember: 2012 2018



Fuel Model: Y - Timber (NFDRS4)

## Remember what Fire Danger tells you:

- ✓ Energy Release Component gives seasonal trends calculated from temperature, humidity, daily temperature & rh ranges, and precip duration.
- ✓ Wind is NOT part of ERC calculation.
- ✓ Watch local conditions and variations across the landscape -- Fuel, Weather, Topography.
- ✓ Listen to weather forecasts -- especially WIND.

## Past Experience:

Uncompahgre Fire Danger Rating Area is bisected by numerous drainages, some of which create significant canyons. Slopes are generally steeper on the southwest side than the northeast. Fuels range from Pinyon/Juniper to Ponderosa pine, Aspen, and mixed conifer as elevation increases. The current fire frequency is relatively low but stand replacing fire did occur across the plateau in 1879. Large fires generally occur when ERC is 58 or greater in combination with other local threshold values. Gambel oak and manzanita are commonly found in the understory and can burn intensely when live foliar moistures are less than 95%.

Responsible Agency: USFS/BLM

FF+5.0 build 20240306 04/10/2025-09:59 (C:\User...\GMUG\_FFP\_2025.03.22)

Design by NWCG Fire Danger Working Team