

# Opening TCP Port 80 in Windows Firewall

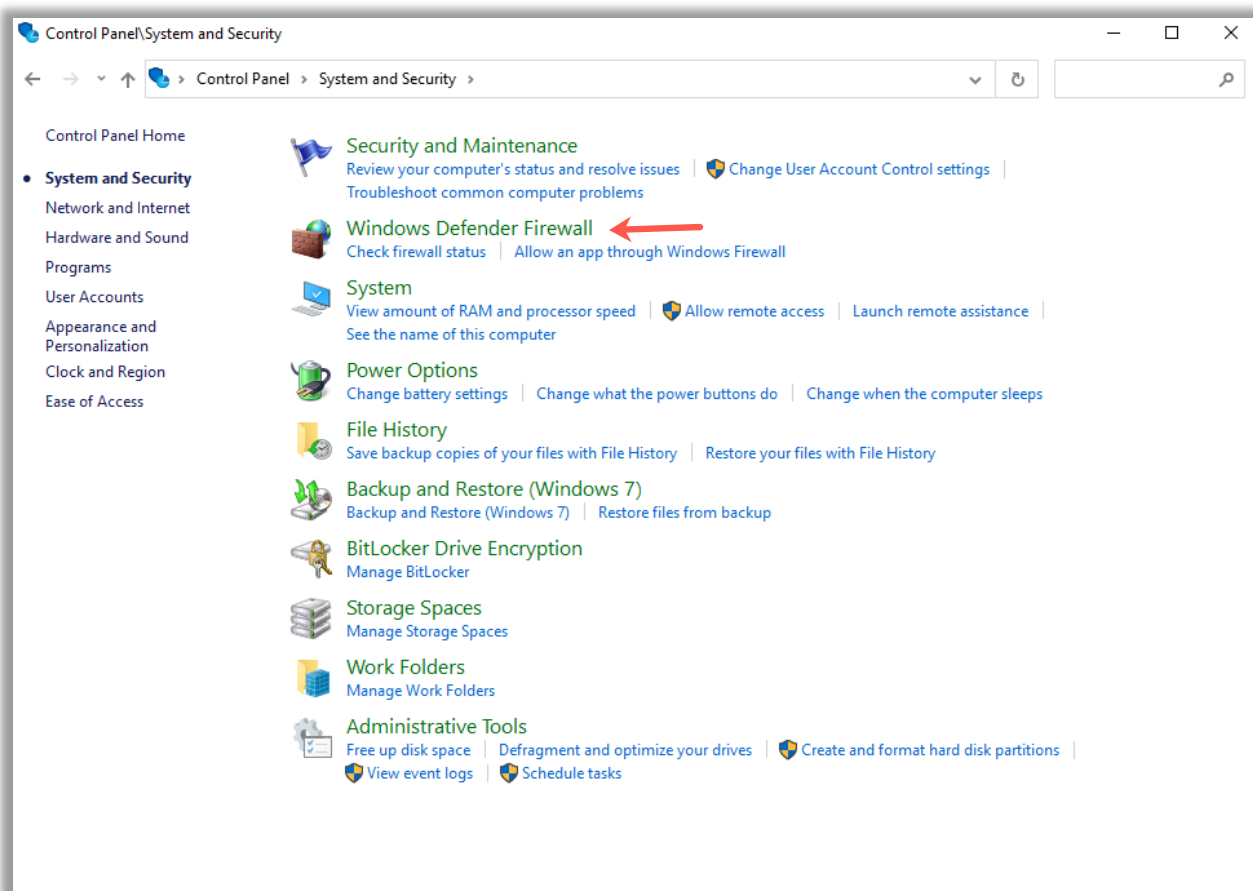
## Open Windows Firewall

### Steps

The following instructions are for opening TCP Port 80 in the Windows Defender Firewall – the firewall software included with Windows. If you are using an alternate firewall, please consult their documentation.

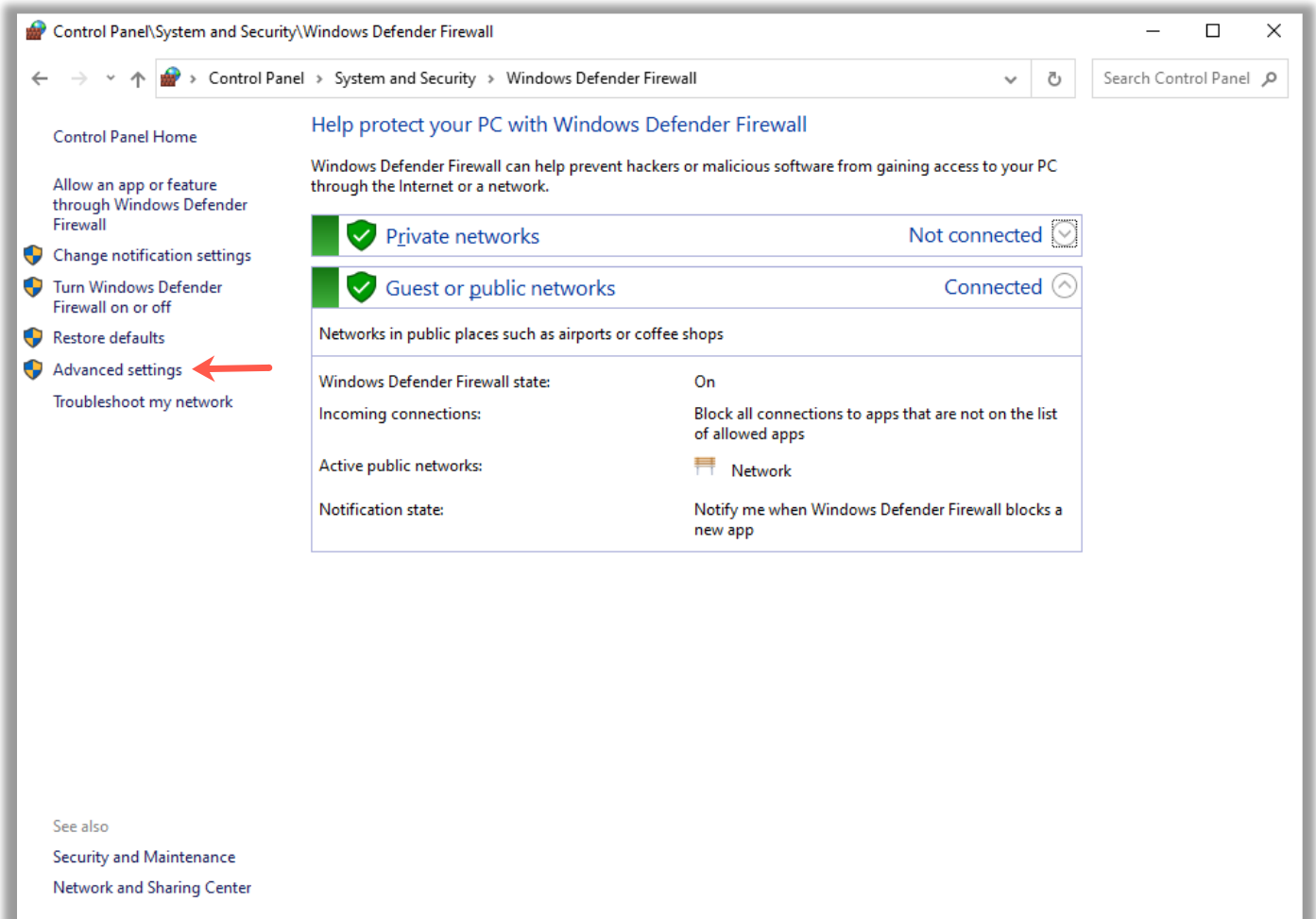
**Important:** It is not adequate to open the port's inbound and outbound traffic for just the program or the service. You must create Port rules as directed below in Step 6, or it will not work.

1. Open **Control Panel** from the Start menu.
2. Select **System and Security**.
3. Select **Windows Defender Firewall**.



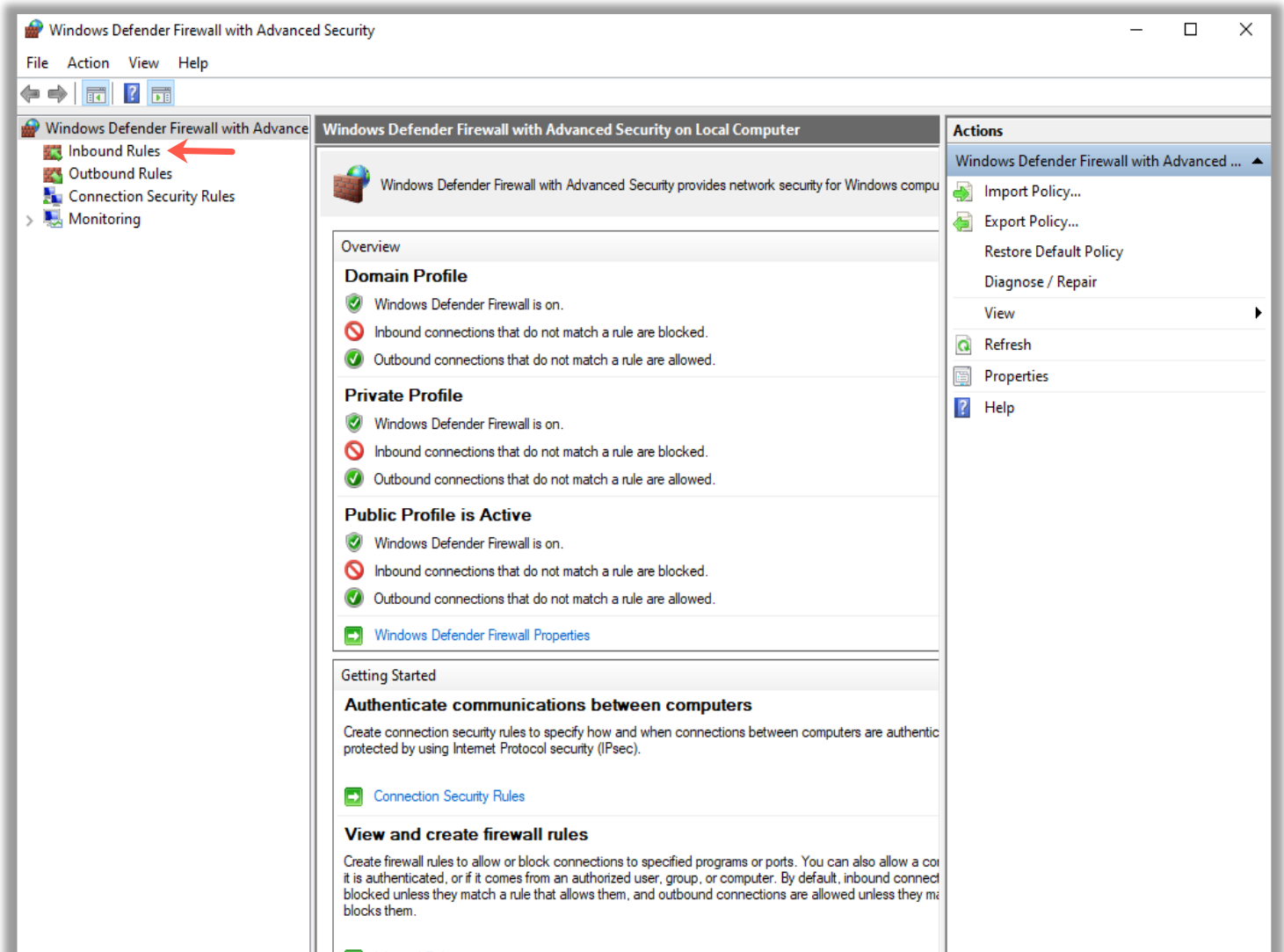
## Select Advanced Settings....

4. Select **Advanced settings** in the left column of the Windows Defender Firewall window.



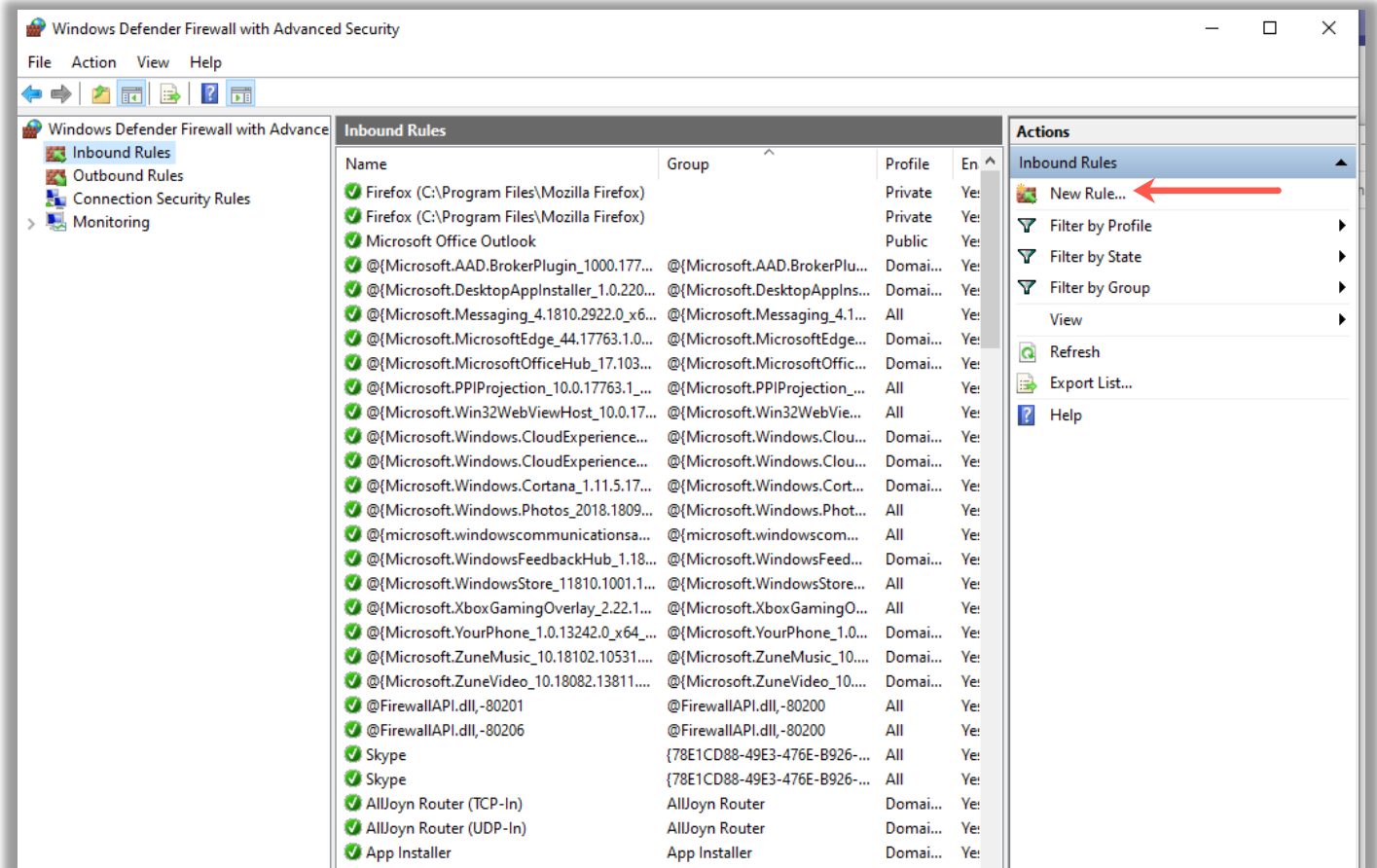
## Select Inbound Rules...

5. Select **Inbound Rules** in the left column of the Windows Defender Firewall with Advanced Security window.



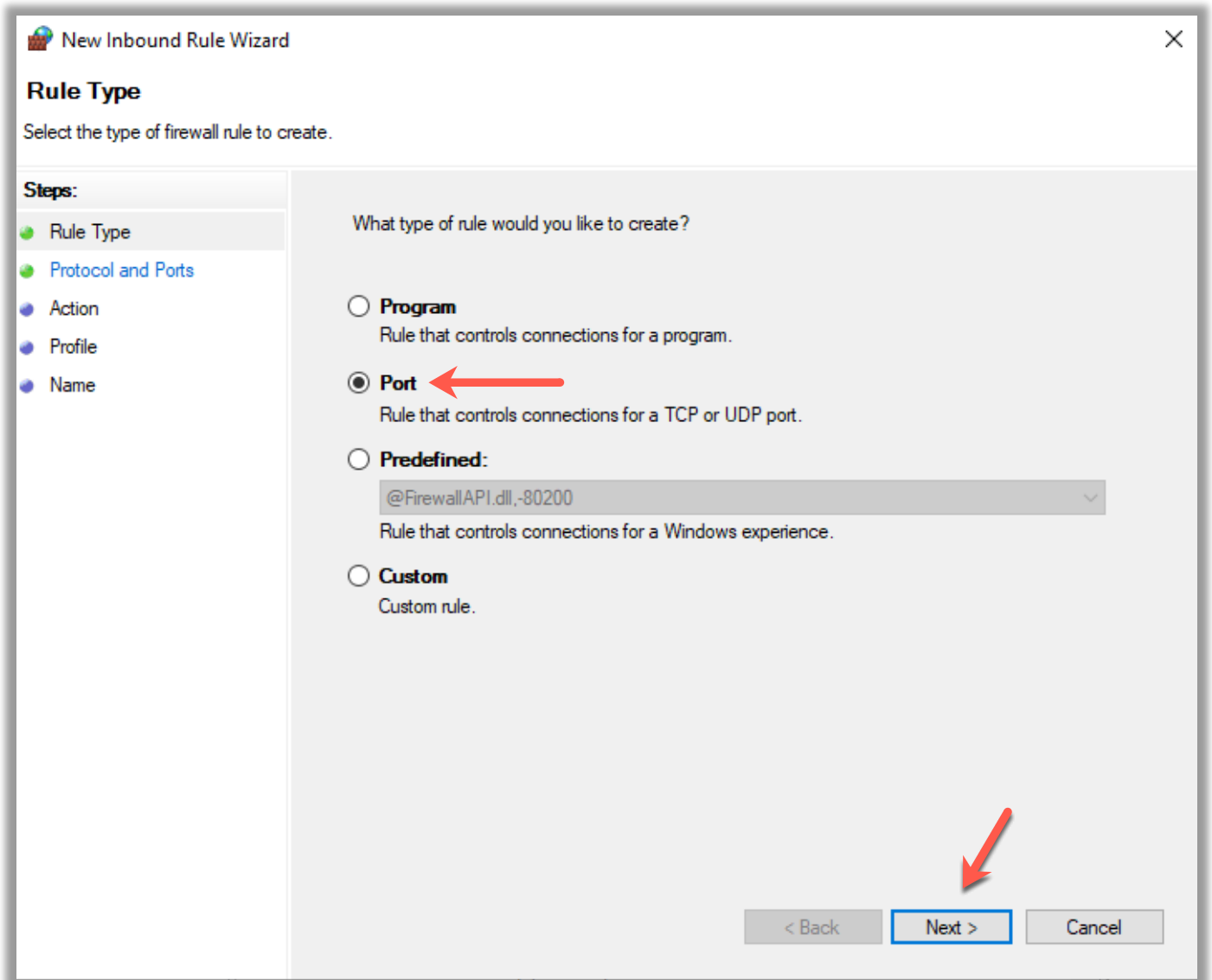
## Select New Rule

6. Select **New Rule** in the right column.



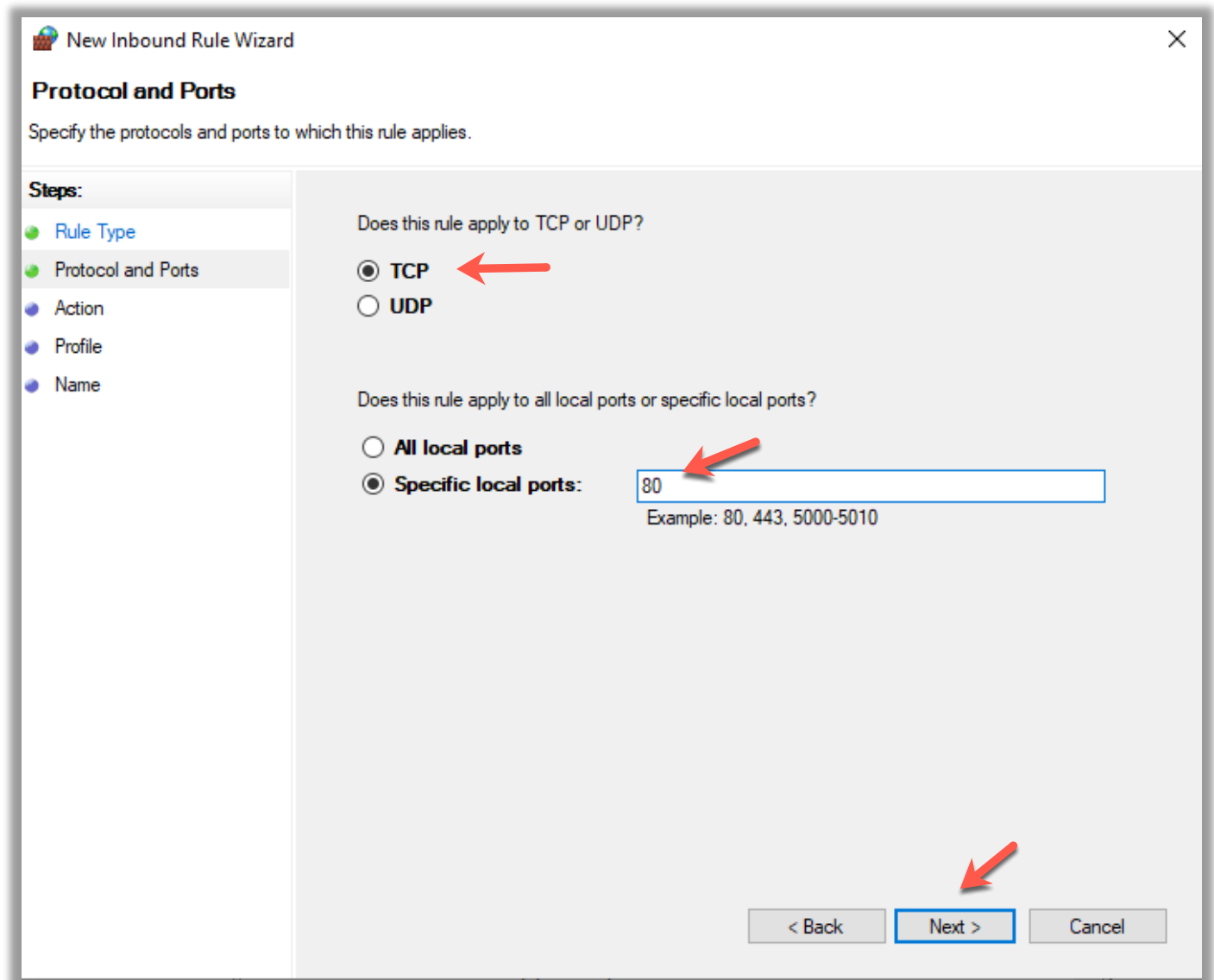
## Select Port...

7. Select **Port** in the New Inbound Rule Wizard and then click **Next**. *Note, do not create a **Program** rule – you must create a **Port** rule.*



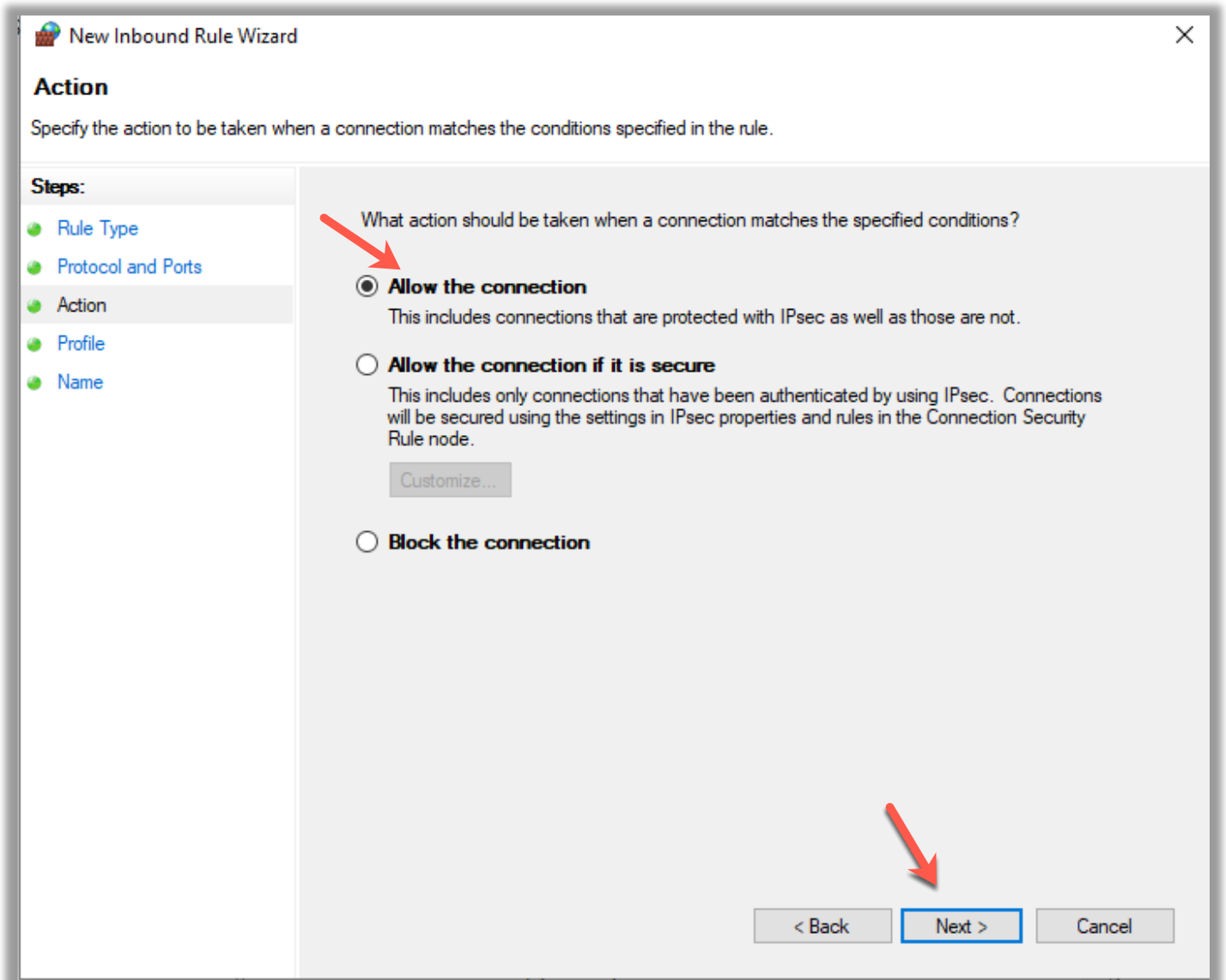
## Set up Protocol and Ports...

8. Select which protocol this rule will apply to **TCP**, Select **Specific local ports**, type port number **80**, and then click **Next**.



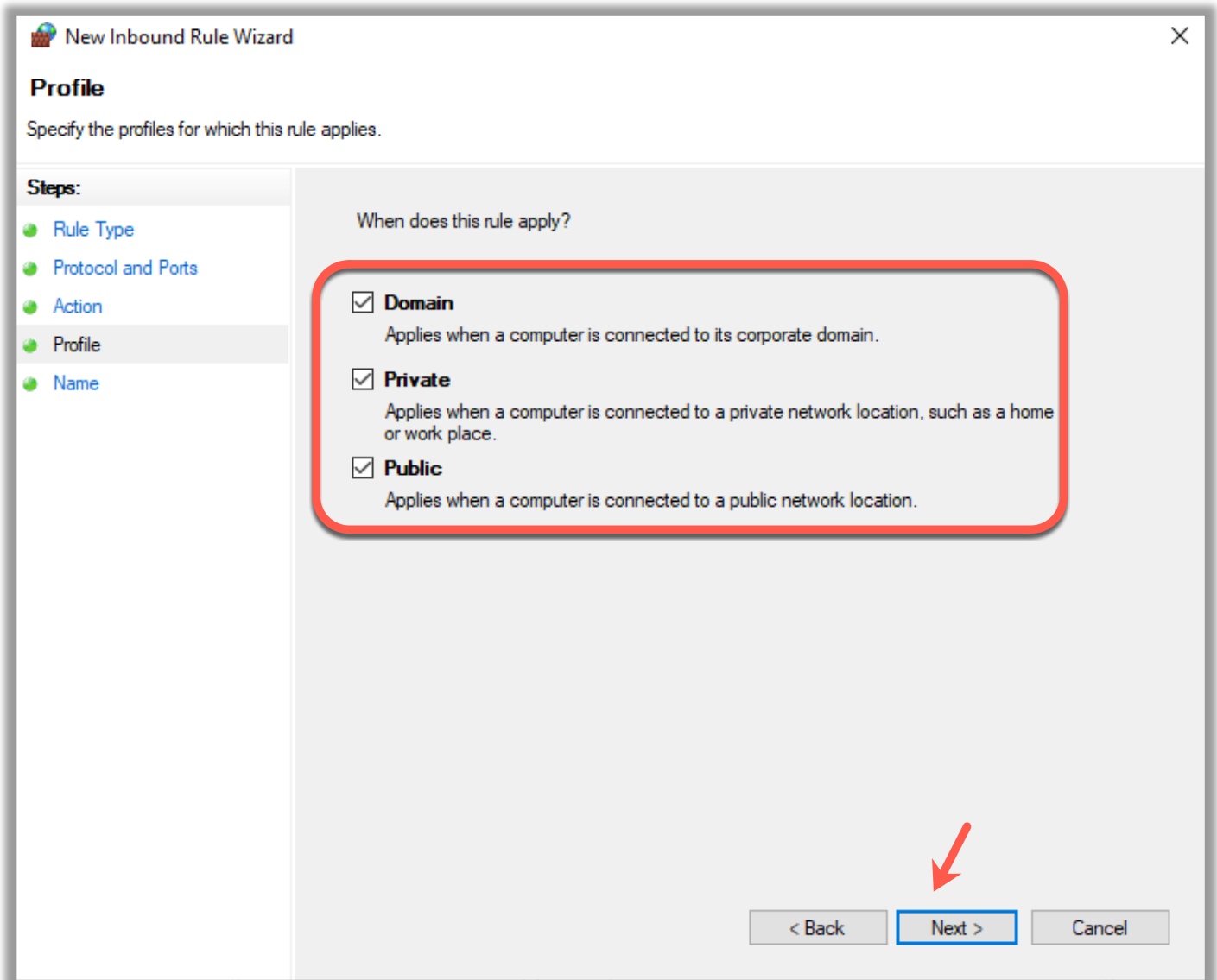
## Allow the Connection...

9. Select **Allow the connection** and then click **Next**.



## Select when this rule applies...

10. Select when this rule applies (check all so it is always open) and then click **Next**.





## Name your rule and Finish...

11. Give this rule a name and then click **Finish** to add the new rule.

