



Figure 1, Regrowth four months after fire.

ROSS/IROC

Newsletter

April 2019

Data Clean Up

The Interagency Resource Ordering Capability (IROC) will replace ROSS on January 1, 2020. IROC will provide a modern tool to support the interagency wildland fire community in ordering, tracking and managing resources in response to wildland fires and all-hazard incidents. IROC is a National Wildfire Coordinating Group (NWCG) affiliated Information Technology system, and a Wildland Fire Information and Technology (WFIT) endorsed

and US Forest Service (USFS) sponsored project.

As we approach the go-live date for IROC, we also approach a new phase of data integration within our suite of fire and dispatch applications. Beginning concurrently with IROC's roll-out, the Integrated Reporting of Wildland-Fire Information (IRWIN) version 6.0 will incorporate resource data from IROC, the qualification systems, and all the major CAD systems. (Continued next page)

Contents

Data Clean Up	1
IROC Update	3
New ROSS Reports.....	4
New Center Folders.....	5
ROSS Training Server.....	6
Credits.....	7

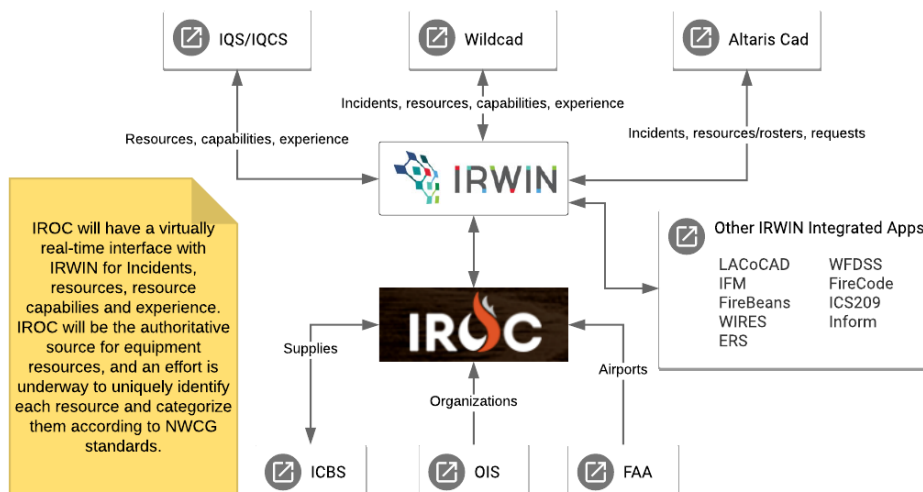
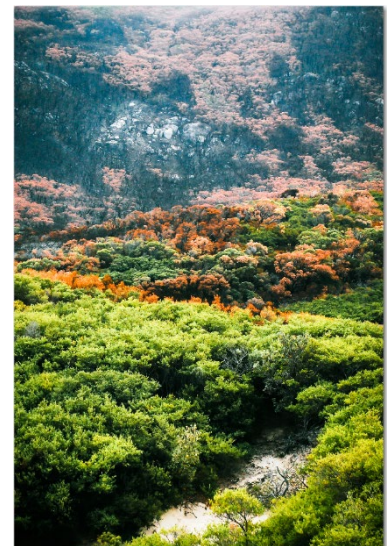


Figure 2, Victoria Wilsons Promontory NP.



(Continued from pg.1)

This enhancement to our current integration environment presents many benefits to our application user community, incident responders, and managers. Utilizing good validation methodology to prevent duplication of inventory, combined with a crosswalk between systems to accurately represent status of a single resource in each system, provides an opportunity for an unprecedented level of accuracy in our view of resource capability. Additionally, workload relief will be apparent to responders, as experience records for incident assignments are derived through the IRWIN integration between IROC and the qualifications systems, significantly reducing the need

for manual entry. These are just a sampling of the efficiency we expect to experience following the IROC go-live.

In preparation for these changes, the user community must engage in certain data clean-up efforts in order to meet IRWIN data validation requirements. Additionally, to facilitate a clean data transfer of ROSS inventory into the IROC database and prevent the need for hand-entry, certain data elements associated with ROSS resource items must be either entered, or edited for accuracy. Data clean-up reports have been provided through the GACCs to assist in the following:

- Equipment resources required to have a VIN need to have that VIN entered.

- In ROSS, this will also require a “year manufactured” be entered.

- Any equipment resource required to have a serial number must have that serial number entered.
- Aircraft must have a valid registration number entered.
- Any resource that has not been utilized in the last three years must be reviewed for possible removal.

Dispatch centers, please review the reports that have been provided to your centers as guidance to meet the above requirements, and utilize the document at the ROSS website. [VIPR/ROSS Duplicate Resource Cleanup](#)

IRWIN_Kind	IRWIN_Category	IRWIN_Type	Validation Level: Data Element
Equipment	Ambulance	Type 1	Category: VINNumber
Equipment	Ambulance	Type 2	Category: VINNumber
Equipment	Ambulance	Type 3	Category: VINNumber
Equipment	Ambulance	Type 4	Category: VINNumber
Equipment	Boat	Type 1	Category: SerialNumber
Equipment	Boat	Type 2	Category: SerialNumber
Equipment	Bus	Coach	Category: VINNumber
Equipment	Bus	Crew Carrier	Category: VINNumber
Equipment	Bus	Shuttle	Category: VINNumber
Equipment	Chipper	Type 1	Category: SerialNumber
Equipment	Chipper	Type 2	Category: SerialNumber

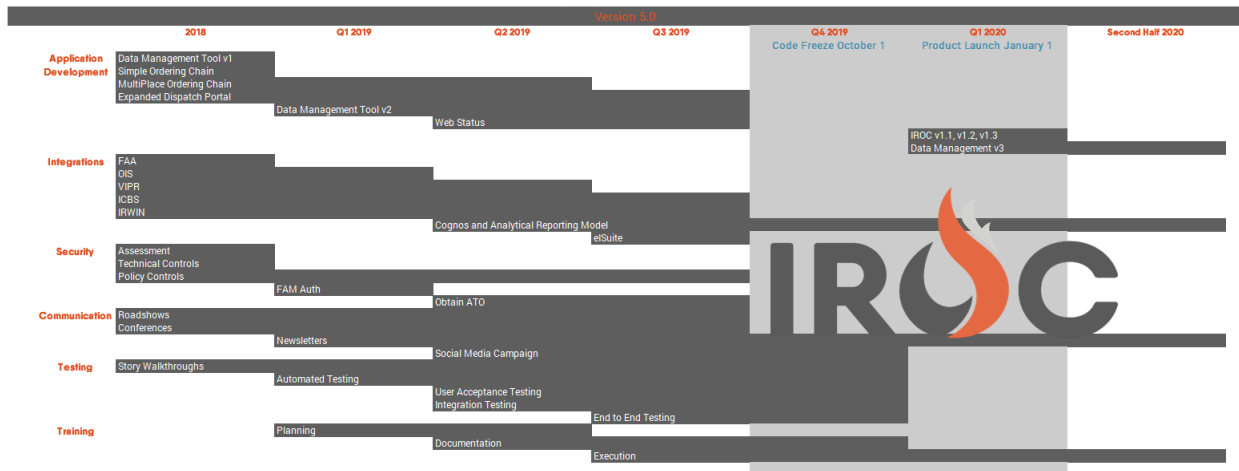
IROC Update



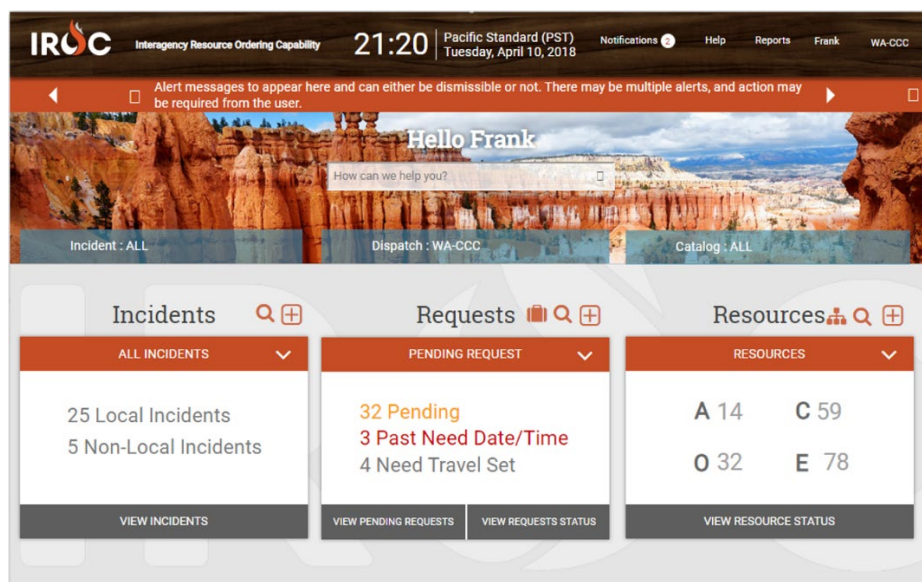
INTERAGENCY RESOURCE ORDERING CAPABILITY

Review IROC progress on the *Product Roadmap* and *IROC Landing Tiles* video.

PRODUCT ROADMAP



IROC Landing Tiles ([Video](#))



New ROSS Reports

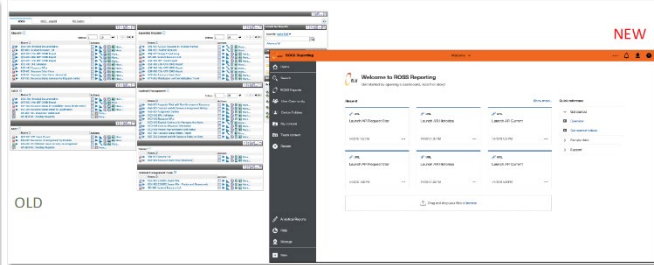
Cognos is the application that ROSS uses for creating and running reports. With the 2.16.14 release, we are upgrading from Cognos 10.2 to Cognos Analytics (Cognos 11).

The User Interface (UI) for Cognos Analytics is significantly different from the UI of previous versions. As a result, what you see when you go into ROSS Reports and the way that you navigate will be different.

The Cognos upgrade is the driver of many of the changes. We've also used this opportunity to implement features to simplify reporting for users.

Reports Portal

The most obvious change is to the page you see when you go into ROSS Reports from ROSS via Reports > Portal Page. The look is different, but the content and organization has been maintained.



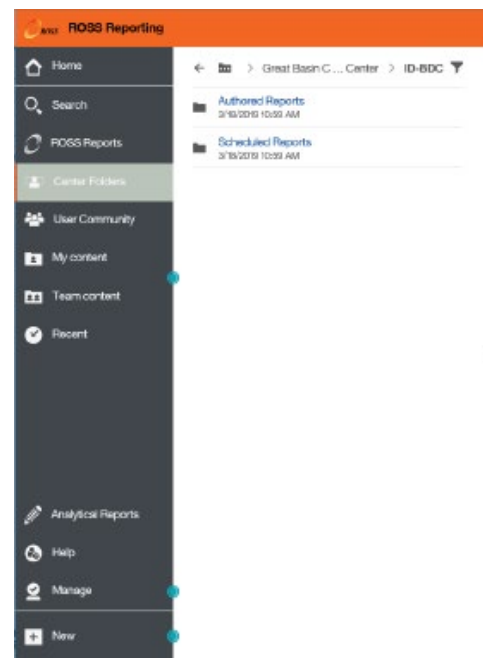
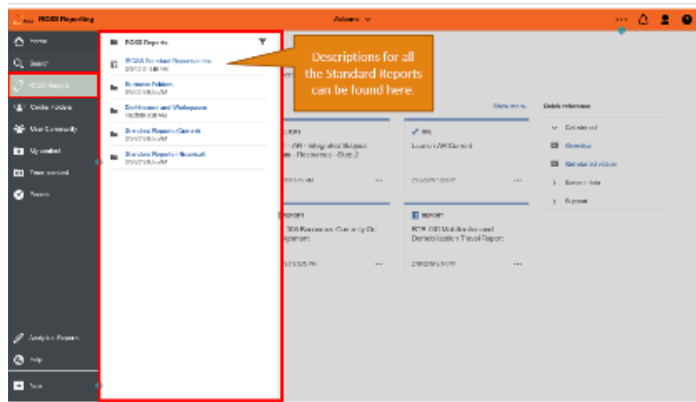
The Cognos 11 upgrade offers a more dynamic user interface. To learn more about transitioning to the new interface refer to [ROSS Reports Upgrade Help](#) at the ROSS website.

The content under "ROSS Reports" mimics much of the organization of the original tabs.

- New, ROSS Standard Reports Index provides hyperlinked listing of all ROSS Standard Reports
- Business Folders, grouping of selected reports based on functional areas.
- Dashboards and Workspaces interactive style reports.
- Standard Reports (Current). Current Standard Reports using the current ROSS dataset.
- Standard Reports (Historical). Current Standard Reports using the historical ROSS dataset.

Additional Features

- Home tab will take you to an intuitive launch site.
- My Content tab personal folder for saving content, accessible only to the user.
- Recent – quick links to content most recently accessed.



New Center Folders

With the Cognos upgrade, a folder structure was added to give each dispatch center, GACC and NICC their own folder in which to save reports that are frequently used at the center.

- Easier to find reports
- Everyone in the center can use the same reports
- Reports can be set up with pre-configured prompts
- A standard location for managing scheduled reports for the center

The contents of each center's folder will vary. This is a place for each center to set up their own file system for commonly-used reports.

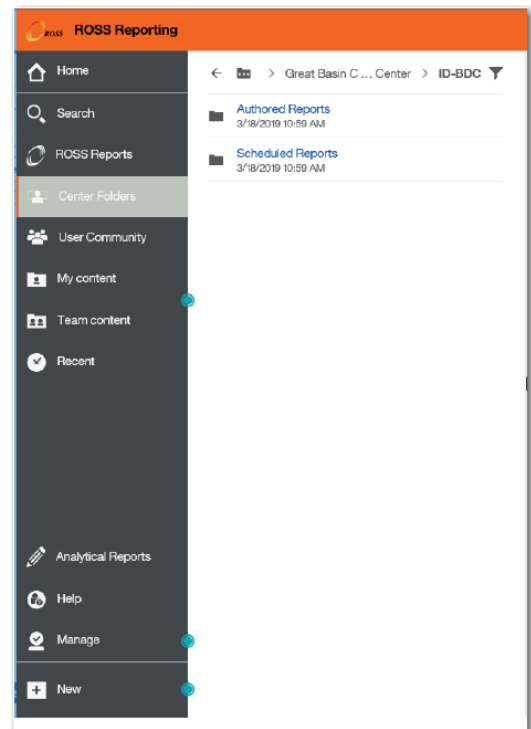
- All Center Folders are created with two standard subfolders
- Authored Reports
- Scheduled Reports
- Center Administrators can create additional folders to organize content in a meaningful way

All users will have access to see the contents of all Center Folders

The Center Administrator does have the ability to 'hide' folders. Hidden folders can only be viewed by other Center Administrators, GACC Administrators or System Administrators.

Only Center Folder Administrators will be able to add/remove content in the Center Folders

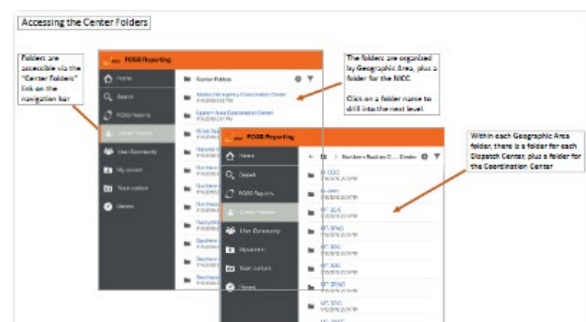
'Center Folder Administrator' is applied at the Geographic Area level. This means that a Center Folder Administrator would have access to add/remove content in any Center Folder within the Geographic Area.



This allows for a Center Administrator to help other centers with getting their folders set up.

Each center is responsible for ensuring that these folders are maintained by removing items that are no longer used. For example, if you've saved Report Views that are configured for a specific incident, remove those Report Views when the incident is over.

For more information review [ROSS Reports Center Folders](#) t the ROSS website.



ROSS Training Server

This page contains information about reserving and using the ROSS Training and Practice servers.

Before scheduling your session, please coordinate with the training team to ensure there is no conflict with the training server. View the [ROSS Training and Practice schedule](#) for scheduled maintenance.

ROSS TRAINING SERVER

Reserving the ROSS Training Server

To schedule the use of the Training server, email the ROSS Training SME, nancy.moore@usda.gov. Please include in the email the following:

1. Which server do you want to reserve: Training; Practice; or both.
2. Dates of training.
3. Type of training (Basic ROSS, D310, California ROSS, etc.).
4. City, State and location (BLM computer room, college, etc.) of training.
5. Contact information for person during the training.
6. You will receive an email confirmation that your session is on the [schedule](#).

Downloading Training

- You will be assigned one of the three Training instances (Training 1, Training 2 or Training 3).
- Download Training from the ROSS [Download Apps](#) page.
- Training instances are reset at 2000 MT each Friday.
- Notify the ROSS Training SME nancy.moore@usda.gov to postpone the reset if your session spans a Friday night.

The Data

- Each Training instance contains data to support the scenarios in the ROSS, D310 and California training scenarios.
- Data may also be used for other training.
- Please forward any data issues to Nancy Moore at nancy.moore@usda.gov ([link sends e-mail](#)).

Username

Training usernames are generic and identified in each type of training's courseware.

Passwords

- **You will not have access to the training server until you are assigned a password.**
- Each Training instance has a new password generated every Friday.
- The password works for every user account in that Training instance.
- The NAP interface is disabled in Training so the passwords cannot be changed or locked up during a training session.
- Course Coordinators will receive the password the Monday of their session.

THE PRACTICE SERVER

Scheduled use of the Practice server (drills, practice etc.) should be scheduled with the ROSS training SME to ensure Practice is available during your session.

User Names and Passwords

- Access to the Practice server requires a NAP account. Students must go through the normal process of requesting a NAP account.
- It is the responsibility of the cadre to give students access to the ROSS Practice server as needed.
- **Downloading Practice**

Click here to download Practice [Download Apps](#)

Questions: Contact **Nancy Moore** nancy.moore@usda.gov (505) 238-1732.

For more user support information visit the [User Support](#) page for User Guides, Quick Reference Cards and Tips and Tricks.

Credits

Figure 1, Regrowth four months after fire. [Link](#)

About CSIRO SciencelImage

Epicormic regrowth from bark of Eucalypt, four months after Black Saturday bushfires, Strathewen, Victoria.

scienceimage is a free image library specialising in science and nature images. It is presented by [CSIRO](#), Australia's major science research organisation.

scienceimage also provides access to CSIRO's database of film and video productions, making it easy to search for footage to suit your requirements.

All images in SciencelImage are free to the public under the [Creative Commons Attribution 3.0 Unported \(CC BY 3.0\) licence](#). If you wish to use an image, the following is required:

Figure 2, Victoria Wilsons Promontory NP

Description: Colorful regrowth after major fires at Wilsons Promontory National Park.
[LinkTommyg 83](#)

License: This file is licensed under the [Creative Commons Attribution-Share Alike 4.0 International](#) license