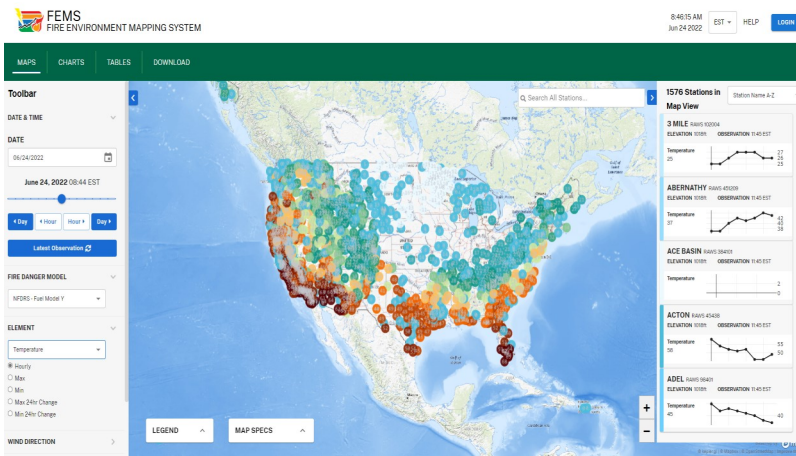


## What is FEMS?

FEMS is a new wildland fire IT application which will support interagency fire danger based decisions with better access to fire environment datasets and online analysis tools. FEMS will:

- ⇒ Include a modern user interface
- ⇒ House the NFDRSv4 calculator
- ⇒ Become the authoritative data source for the following Fire Environment Datasets
  - RAWS Observations
  - NFDRS Outputs
  - Sampled Fuel Moisture Data
  - Lightning Data
- ⇒ Provide an operational platform for new fire environment science and models



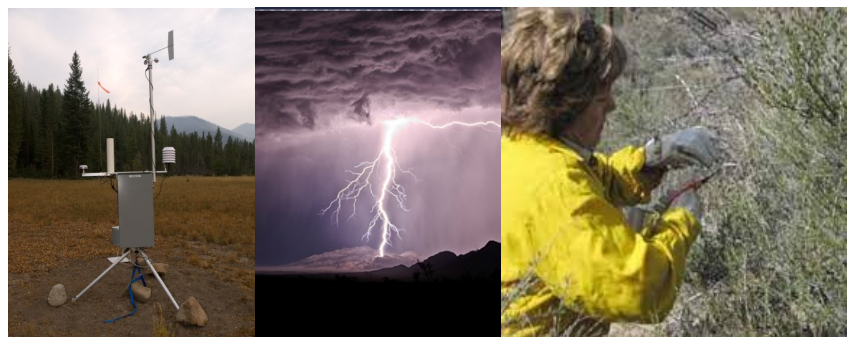
Fire Danger: Any Place, Any Time...

2022 AUGUST

# NEWSLETTER

## WHAT'S INSIDE

- What is FEMS?
- Why FEMS?
- When can I use FEMS?
- What's included in 1.0?
- FEMS Roadmap
- What about WIMS?
- How can I stay informed?



## WHY FEMS?

The need for easy access to fire danger and fire environment data to support wildland fire decision making has never been higher.

Modernization to our current fire environment platforms is greatly needed to keep up with and support new science and developing technology.

FEMS is being built to deliver solutions to these issues.



## When can I use FEMS and what is included in 1.0?

**FEMS 1.0 is scheduled for release in Fall 2022. It will include maps, tables and charts views of the following datasets:**

- ⇒ Historical Hourly RAWS weather observations and 7 Day forecast
- ⇒ Historical Hourly RAWS NFDRSv4 outputs and 7 Day forecast

### FEMS 2023 DEVELOPMENT PHASES

Add National Fuel Moisture Data

Add Non RAWS from WIMS

Add User Settings/ Preferences

Add Station/Data Edit Functionality

### FEMS 2023 DEVELOPMENT

2023 Development will mainly focus on bringing in functionality from both the National Fuel Moisture Database (NFMD) product and the WIMS application in preparation for bringing them to end of life.

## What about WIMS?



Until FEMS is operational and replicates all WIMS functionality, WIMS will remain the official application for managing fire danger data.

Transition from WIMS to FEMS will be communicated to users through system notifications and agency correspondence.

## ADDITIONAL DATASETS AND ANALYSIS:

More datasets, analysis tools and decision support modules are planned for post 2023 development including items in the list below. The FEMS Sponsor and Design Groups will continue to refine and add to this list.

### POST 2023 FEMS DEVELOPMENT PHASES – PARTIAL LIST

Add Lightning Data

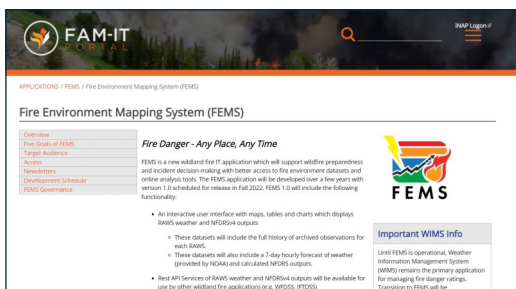
Add Access to Historical Fire Occurrence

Add Canadian Fire Danger Model

Add other Gridded Fuels Datasets

Add Gridded Weather and NFDRS Outputs

Add Fire Family Plus Analysis Tools



### FEMS FAM-IT WEBSITE

Visit the FEMS [website](#) to learn more about the Fire Environment Mapping System, and to sign up for newsletters and notifications.